

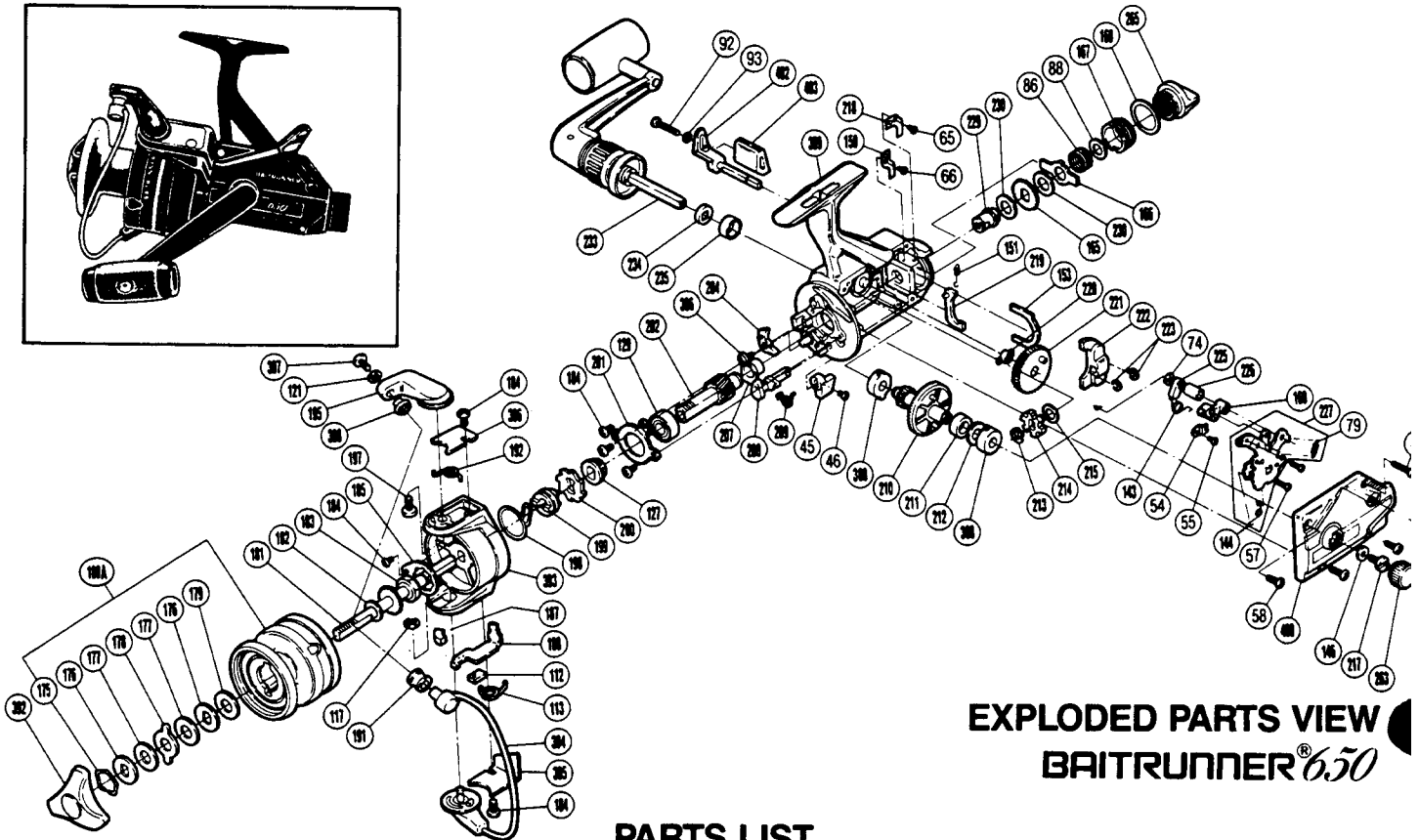
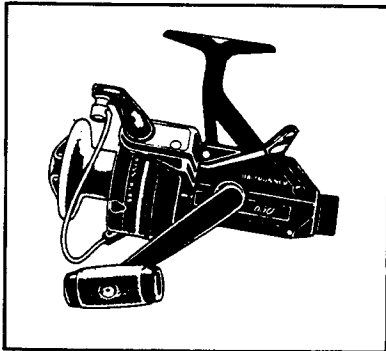
SHIMANO®

1987 REPAIR MANUAL

Shimano American Corporation, One Shimano Dr.
Irvine, CA 92718

TO ORDER:

This reel belongs to the "BaitRunner" series.
Please order parts using the abbreviation
"BR" and the part number.



EXPLODED PARTS VIEW
BAITRUNNER® 650

PARTS LIST

PART # DESCRIPTION

45.	Anti-Reverse Lever
46.	Anti-Reverse Lever Screw
54.	Lever Shaft Retainer
55.	Shaft Retainer Screw
57.	Clutch Plate Screw
58.	Side Cover Screw A
65.	Dial Click Screw
66.	Pawl Guide Screw
74.	Clutch Cam Spacer B
79.	Baitrunner Click Spring
80.	Side Cover Screw B
86.	Free Spool Tension Spring
88.	Tension Spring Washer "B"
92.	Baitrunner Lever Screw
93.	Lock Washer
112.	Trip Lever Guide
113.	Lever Spring
117.	"E" Lock
121.	Lock Washer
127.	Pinion Spacer
129.	Ball Bearing
143.	Clutch Spring
144.	Clutch Pawl Spring
146.	Handle Lock Washer
150.	Baitrunner Pawl Guide
151.	Baitrunner Pawl Spring
153.	Dial Retainer
160.	Clutch Arm
165.	Click Gear
166.	Eared Washer "BFS"
167.	Free Spool Tension Screw
168.	Dial Spacer

PART # DESCRIPTION

175.	Drag Washers Retainer
176.	Key Washer
177.	Drag Washer 1
178.	Eared Washer
179.	Drag Washer 2
180A.	Spool Assembly (Universal)
181.	Main Shaft
182.	Spool Washer
183.	Rotor Nut
184.	Multi Purpose Screw
185.	Rotor Nut Lock Plate
187.	Bail Trip Slide Cam
188.	Bail Trip Lever
191.	Line Roller
192.	Bail Spring
195.	Bail Arm
197.	Bail Arm Screw
198.	Anti-Reverse Pawl Spring
199.	Anti-Reverse Spring Holder
200.	Anti-Reverse Ratchet
201.	Bearing Retainer
202.	Pinion Gear
204.	Anti-Reverse Pawl
207.	Pinion Gear Bushing
208.	Anti-Reverse Cam
209.	Anti-Reverse Cam Spring
210.	Drive Gear
211.	Drive Gear Spacer
212.	Drive Gear Washer
213.	"C" Lock
214.	Baitrunner Ratchet
215.	Ratchet Spacer

PART # DESCRIPTION

217.	Handle Lock Screw
218.	Dial Click
219.	Baitrunner Pawl
220.	Oscillating Gear Bushing
221.	Oscillating Gear
222.	Oscillating Slider
223.	"C" Lock
225.	Clutch Cam
226.	Clutch Cam Spacer A
227.	Clutch Plate Assembly
229.	Free Spool Tension Shaft
230.	Free Spool Tension Washer
233.	Handle Assembly
234.	Handle Lock Spacer
235.	Handle Lock Ring
263.	Handle Screw Cap
265.	Baitrunner Tension Dial
386.	Anti-Reverse Pawl Screw
388.	Bushing
392.	Drag Knob
393.	Rotor
394.	Bail Assembly
395.	Bail Trip Cover
396.	Bail Spring Cover
397.	Line Roller Screw
398.	Line Roller Washer
399.	Body
400.	Side Cover
401.	Baitrunner Lever Arm (L)
402.	Baitrunner Lever Arm (R)
403.	Baitrunner Lever Bridge